

Biblioteca de Add-on (Indicadores e Trading Systems)

Nesse tutorial você irá aprender como buscar, salvar e aplicar no gráfico um indicador (com a extensão EFS) na biblioteca eSignal.

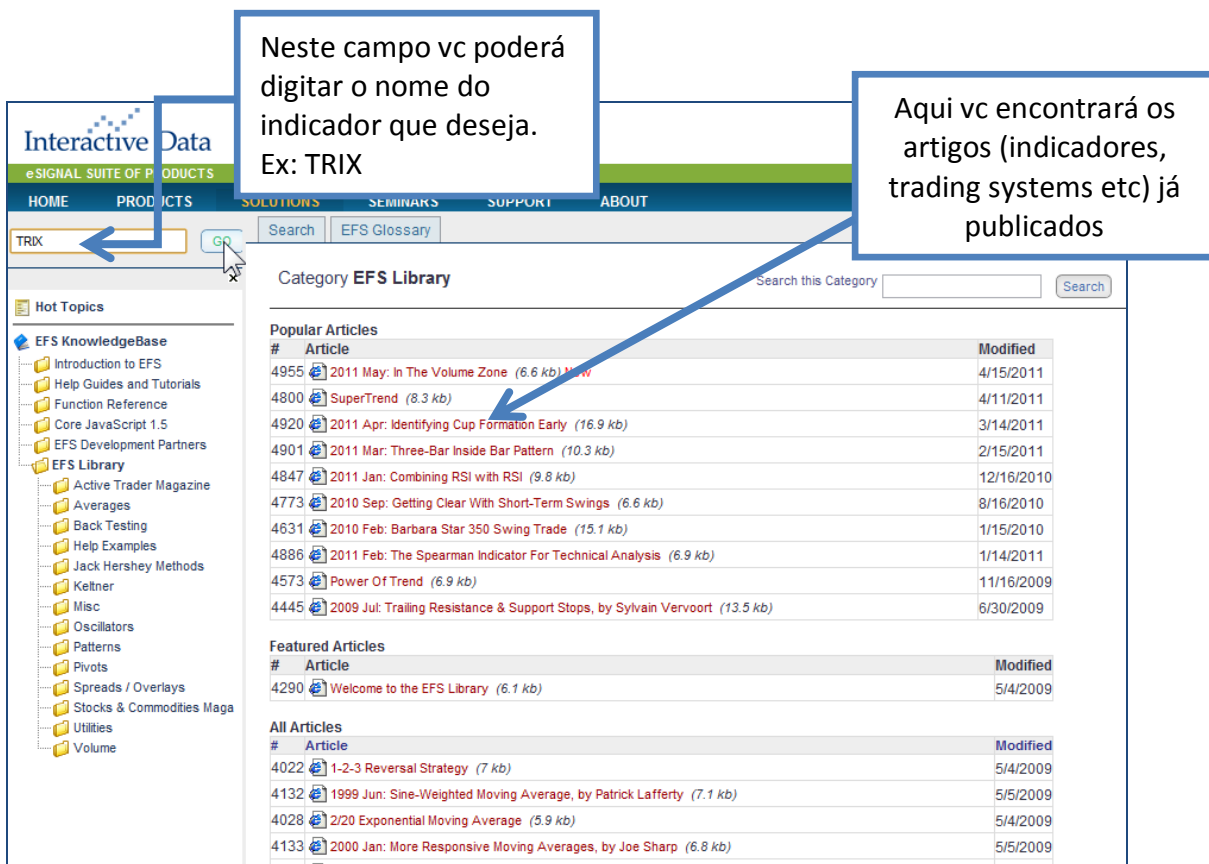
Obs: EFS é o tipo de extensão de um arquivo do eSignal que pode ser: um indicador ou um trading system.

Caso o eSignal não possua o indicador que você deseja, procure em nossa biblioteca esse indicador (que terá a extensão EFS).

PROCEDIMENTO:

Acesse a seção **EFS KnowledgeBase** através do link abaixo

<http://kb.esignal.com/?c=12&cid=4&cpc=ULwOOA442oKs512Q04X5j0UupP4Svel6dt2WJi7&cat=1002&catURL=kb%3D6%26L1cid%3D1002%26level%3D2%26>



Neste campo vc poderá digitar o nome do indicador que deseja.
Ex: TRIX

Aqui vc encontrará os artigos (indicadores, trading systems etc) já publicados

Interactive Data
eSIGNAL SUITE OF PRODUCTS
HOME PRODUCTS SOLUTIONS SEMINARS SUPPORT ABOUT

TRX Search EFS Glossary

Category EFS Library

Popular Articles

#	Article	Modified
4955	2011 May: In The Volume Zone (6.6 kb) <i>New</i>	4/15/2011
4800	SuperTrend (8.3 kb)	4/11/2011
4920	2011 Apr: Identifying Cup Formation Early (16.9 kb)	3/14/2011
4901	2011 Mar: Three-Bar Inside Bar Pattern (10.3 kb)	2/15/2011
4847	2011 Jan: Combining RSI with RSI (9.8 kb)	12/16/2010
4773	2010 Sep: Getting Clear With Short-Term Swings (6.6 kb)	8/16/2010
4631	2010 Feb: Barbara Star 350 Swing Trade (15.1 kb)	1/15/2010
4886	2011 Feb: The Spearman Indicator For Technical Analysis (6.9 kb)	1/14/2011
4573	Power Of Trend (6.9 kb)	11/16/2009
4445	2009 Jul: Trailing Resistance & Support Stops, by Sylvain Vervoort (13.5 kb)	6/30/2009

Featured Articles

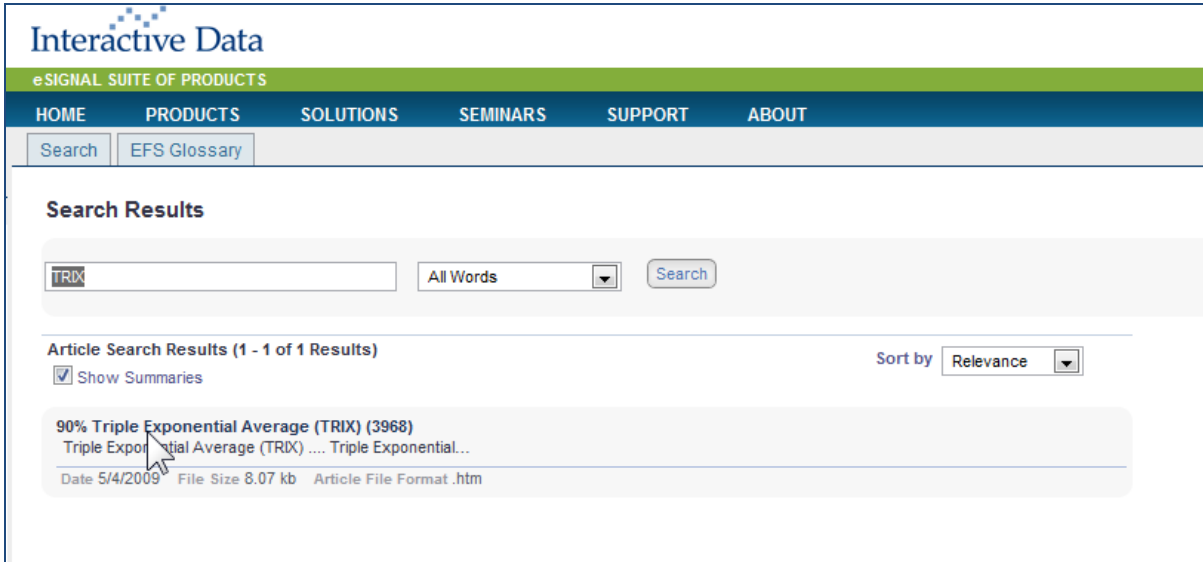
#	Article	Modified
4290	Welcome to the EFS Library (6.1 kb)	5/4/2009

All Articles

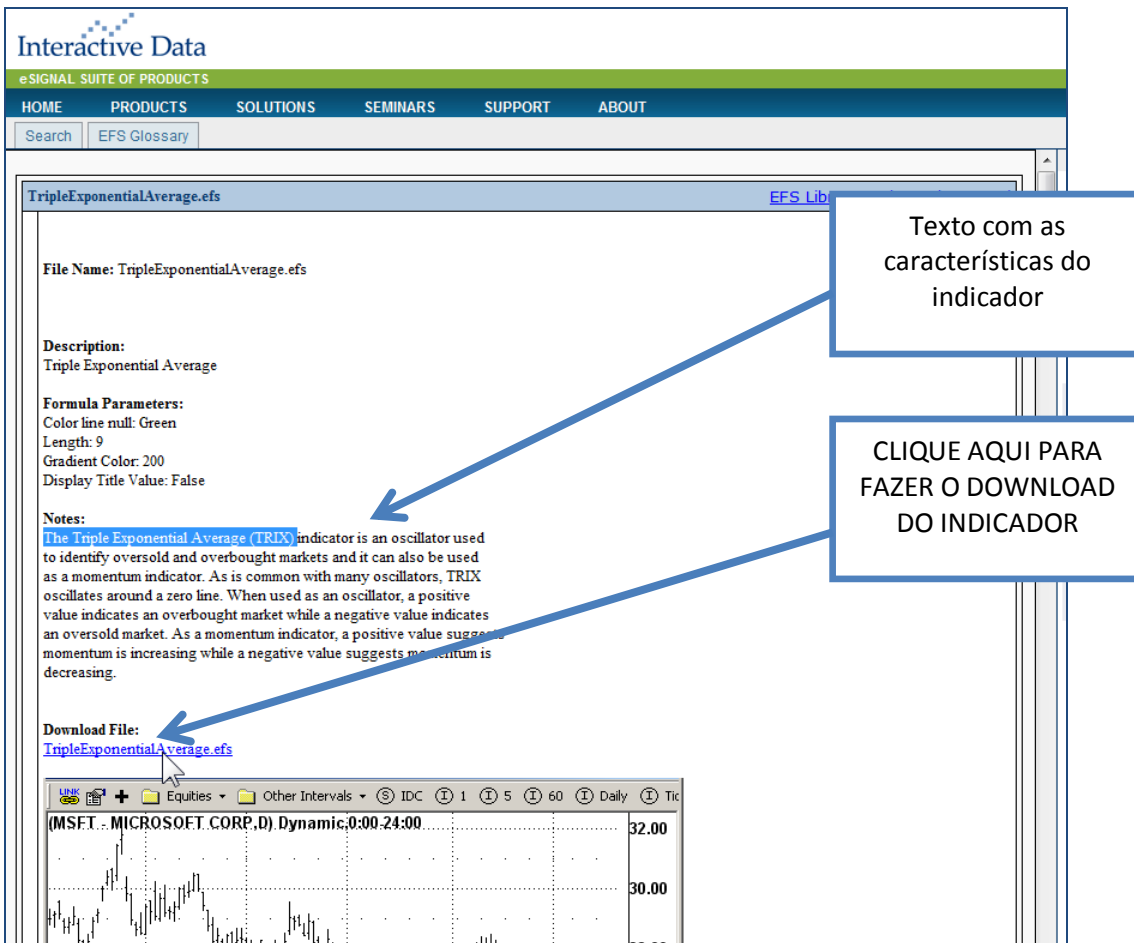
#	Article	Modified
4022	1-2-3 Reversal Strategy (7 kb)	5/4/2009
4132	1999 Jun: Sine-Weighted Moving Average, by Patrick Lafferty (7.1 kb)	5/5/2009
4028	2/20 Exponential Moving Average (5.9 kb)	5/4/2009
4133	2000 Jan: More Responsive Moving Averages, by Joe Sharp (6.8 kb)	5/5/2009

Após clicar em "GO" aparecerá o resultado da busca. Veja abaixo.

Clique no link do resultado



The screenshot shows the Interactive Data website's search results page. At the top, there is a navigation bar with 'HOME', 'PRODUCTS', 'SOLUTIONS', 'SEMINARS', 'SUPPORT', and 'ABOUT'. Below this is a search bar containing the text 'TRIX'. The search results section is titled 'Search Results' and shows 'Article Search Results (1 - 1 of 1 Results)'. A single result is displayed: '90% Triple Exponential Average (TRIX) (3968)'. The result includes a date of '5/4/2009', a file size of '8.07 kb', and a file format of '.htm'. A mouse cursor is pointing at the title of the result.



This screenshot shows the detailed page for the 'Triple Exponential Average (TRIX)' indicator. The page title is 'TripleExponentialAverage.efs'. It includes the following information:

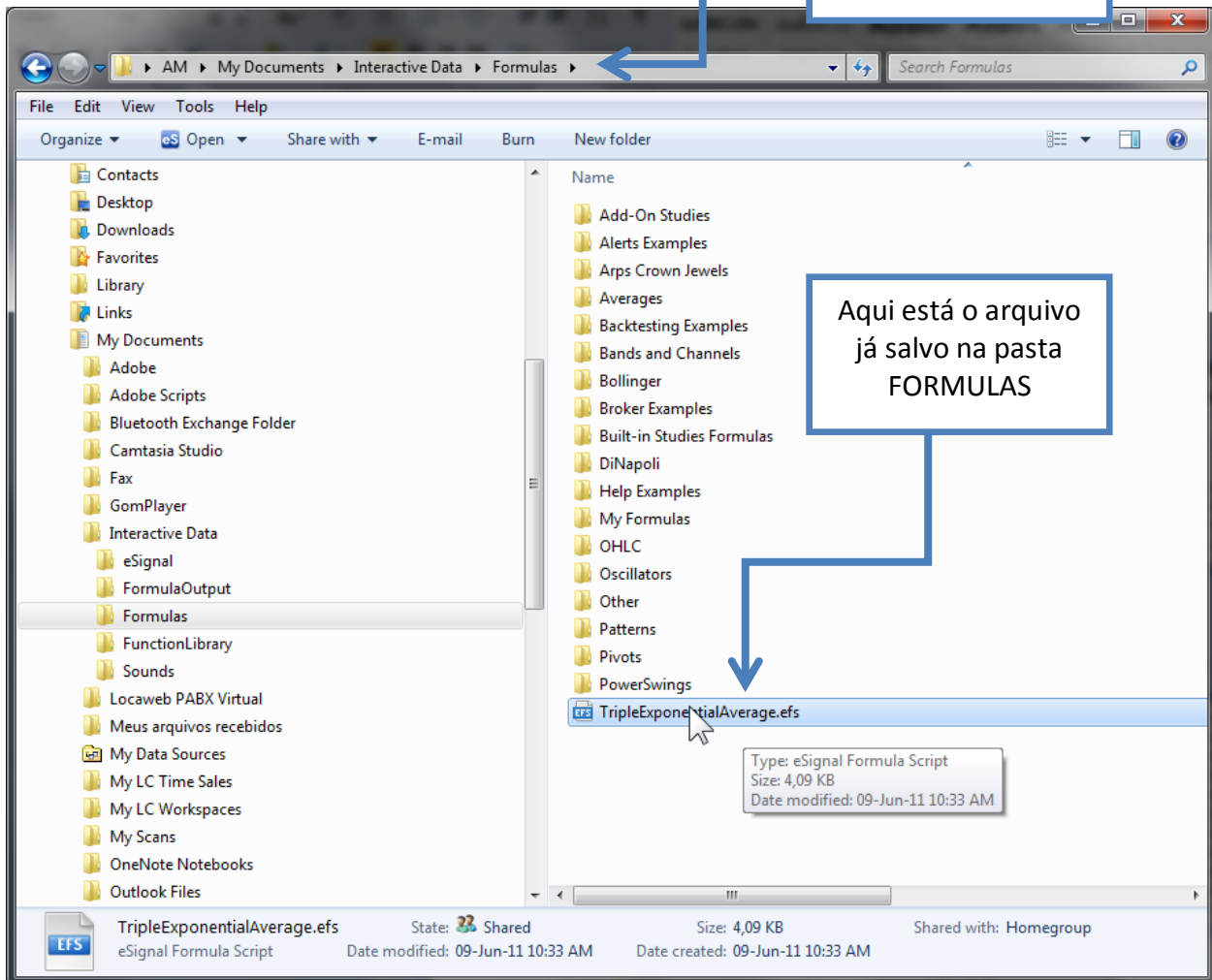
- File Name:** TripleExponentialAverage.efs
- Description:** Triple Exponential Average
- Formula Parameters:**
 - Color line null: Green
 - Length: 9
 - Gradient Color: 200
 - Display Title Value: False
- Notes:** The Triple Exponential Average (TRIX) indicator is an oscillator used to identify oversold and overbought markets and it can also be used as a momentum indicator. As is common with many oscillators, TRIX oscillates around a zero line. When used as an oscillator, a positive value indicates an overbought market while a negative value indicates an oversold market. As a momentum indicator, a positive value suggests momentum is increasing while a negative value suggests momentum is decreasing.
- Download File:** [TripleExponentialAverage.efs](#)

Two callout boxes with blue arrows point to specific elements on the page:

- The first callout box, containing the text 'Texto com as características do indicador', points to the 'Notes' section.
- The second callout box, containing the text 'CLIQUE AQUI PARA FAZER O DOWNLOAD DO INDICADOR', points to the 'Download File' link.

At the bottom of the page, a partial view of a stock chart for '(MSFT.. MICROSOFT..CORP..D) Dynamic;0:00-24:00' is visible, showing price movement over time.

Salve o arquivo no caminho abaixo, na pasta FORMULAS



Escolha o indicador deste exemplo: “TripleExponentialAverage.efs”.



“TripleExponentialAverage.efs”.





Aqui está o indicador (TRIX) adicionado ao gráfico